

PRELIMINARY DESIGN AND PUBLIC CONSULTATION FOR ROUTE 90 - WEB ANNOUNCEMENT

November 18, 2008

The City of Winnipeg Public Works Department is pleased to announce the commencement of the Preliminary Design and Public Consultation Study for Route 90 (Kenaston Boulevard) from Taylor Avenue to Ness Avenue.

The City has selected MMM Group Limited to undertake this project. MMM Group will lead the consultant team that includes Landmark Planning and Design (public engagement), Marr Consulting Services (active transportation), Hilderman Thomas Frank Cram (landscape and accessible design), Patching Associates Acoustical Engineering Ltd. (noise level forecasts and sound attenuation), Stevenson Advisors (property costing), and Probe Research Inc. (public opinion surveys). The study is scheduled for completion in the winter of 2009/2010.

Reason for the Study

Route 90 is a vital transportation corridor through the City of Winnipeg linking major residential, employment and commercial areas in the southwest and northwest quadrants of the City. Already one of Winnipeg's busiest thoroughfares, Route 90's role in the movement of people and goods will expand with developments such as the Waverley West neighbourhoods, the planned redevelopment of the Kapyong Barracks lands, and additional commercial development in southwest Winnipeg.

The study will examine conceptual options for widening Route 90 to six lanes between Taylor Avenue and Ness Avenue (Figure 1), and related requirements for intersection improvements and alterations to the St. James Bridge and ramp structures. A major consideration of the study will be the incorporation of "active transportation" features into the project. Active transportation is defined as all non-motorized forms of transportation, including walking, cycling, and roller blading, for both recreational and commuting purposes.

The corridor improvements are intended not only to improve traffic flow, but to help reduce the negative impacts of Route 90 on the adjacent residential environment. The study

will take into account all users of the corridor with special emphasis on transit operations and addressing pedestrian and cyclists' needs including safety and convenience. Conceptual corridor improvement options will be developed, analyzed and rated according to performance measures involving people movement and neighbourhood impacts, and a preferred conceptual option will be recommended for further refinement following an extensive program of public consultation.

Study Oversight

The study team will work under the direction of a Steering Committee comprised of representatives from key City departments including Public Works, Planning, Property and Development, Water and Waste, and Transit.

Study Components

The study scope includes the following major components:

- Facilitate a Comprehensive and Integrated Public Consultation Program
- Prepare conceptual road alignment options
- Prepare related bridge and Portage Avenue connection options
- Review related municipal services and public utilities
- Integrate professional landscape design
- Conduct traffic and transit operations analyses
- Conduct noise analyses
- Develop an access management plan
- Conduct a safety review
- Assess active transportation needs and opportunities, and develop solutions
- Determine property impacts and acquisition costs
- Conduct neighbourhood traffic review
- Prepare preliminary design of road works and bridge/ramp structures
- Prepare cost estimates
- Prepare project phasing schedule

Public Consultation

In embarking on this study, the City recognizes the importance of Route 90 as a regional street serving many Winnipeggers, as well as the impact that Route 90 has on the adjacent residential and commercial areas. The major goals of the study are to improve traffic movement along the corridor, improve opportunities for non-vehicular users of the corridor, and mitigate or improve existing or potential impacts on adjacent neighbourhoods. To this end, a comprehensive program of public consultation has been designed to engage affected residents and business owners on several levels including first person interviews, small meetings, survey questionnaires and public open houses. Figure 2 indicates how the public engagement program will be integrated with the corridor functional design and technical analyses. The program began in October with a telephone survey, the results of which will be posted on the project web site. The first round of stakeholder interviews will be completed over the next couple of months, and the first of two Open House events is scheduled to occur in early 2009.

Further Information

Please visit this web site for regular updates on study progress, public opinion survey results, and opportunities for public comment and input. For further information, please contact:

Richard Tebinka, P.Eng.
MMM Group
tel.: 943-3178
e-mail: tebinkar@mmm.ca

Neil Myska
City of Winnipeg, Public Works Department
tel.: 986-7774
e-mail: nmyska@winnipeg.ca

Attachments

Figure 1: Study Area

Figure 2: Public Consultation Program and Project Time Line

FIGURE 1: ROUTE 90 STUDY CORRIDOR

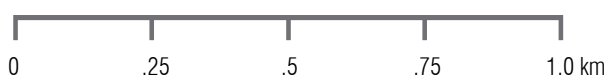
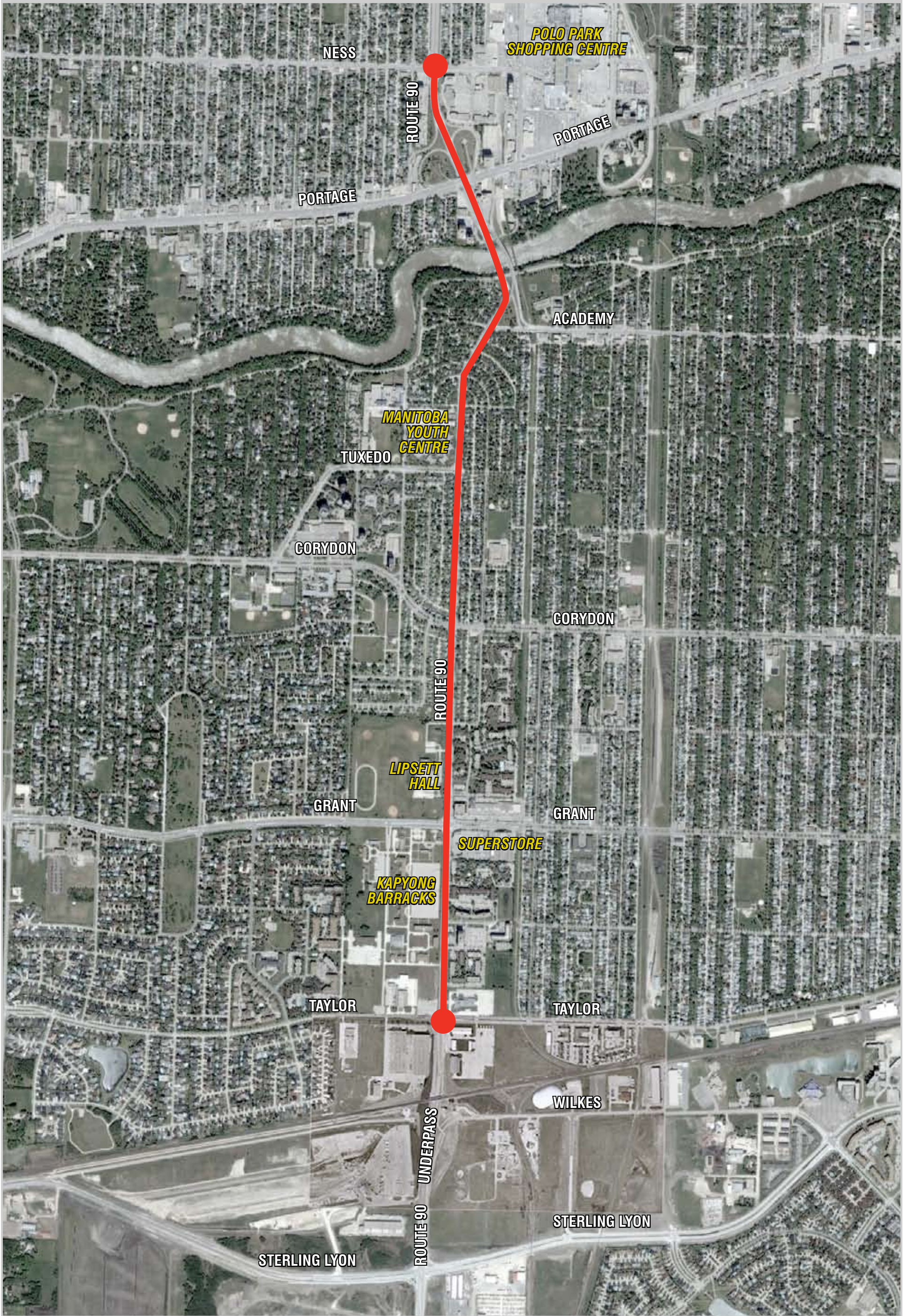


FIGURE 2: ROUTE 90 PUBLIC CONSULTATION PROGRAM

